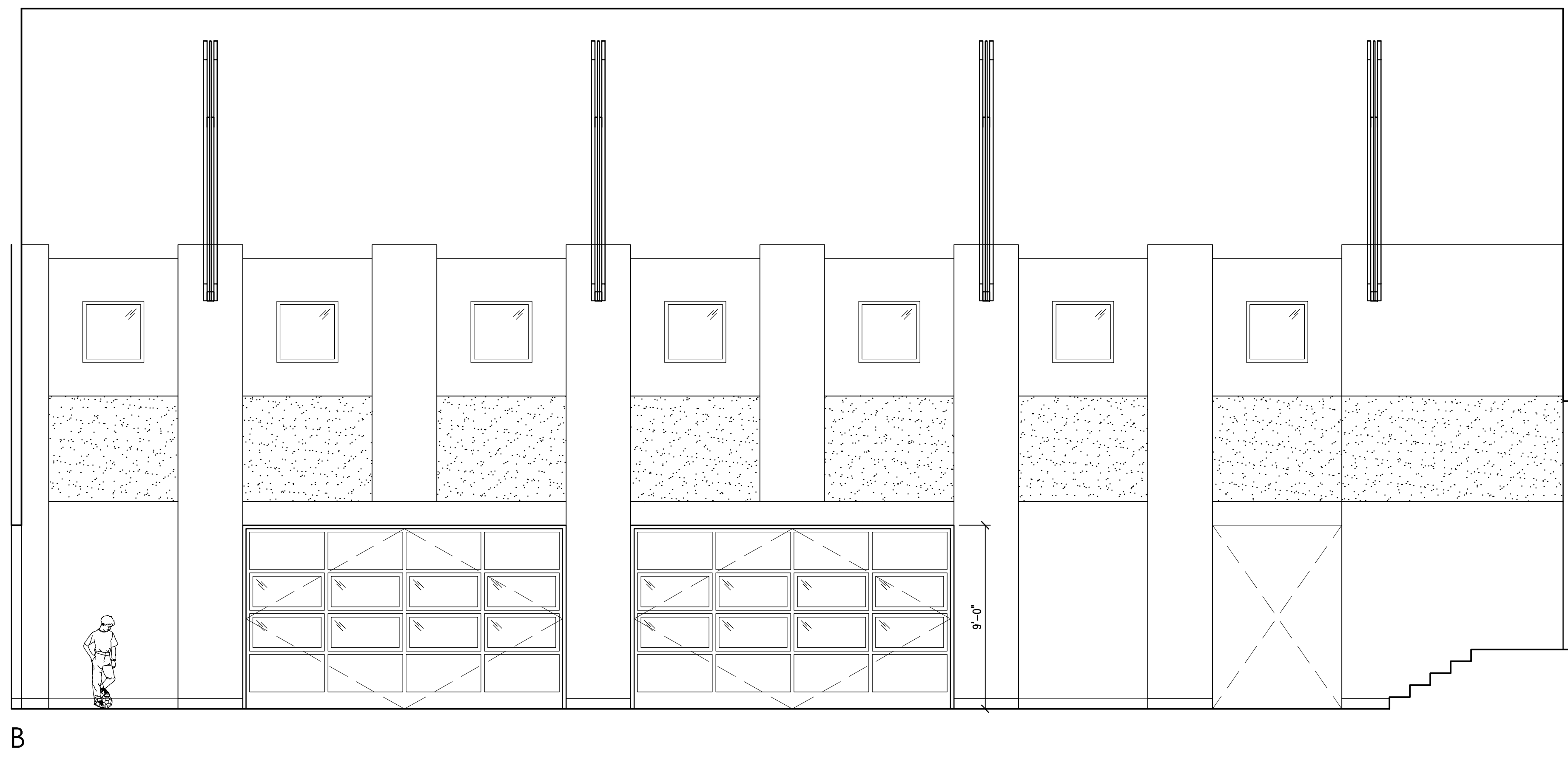
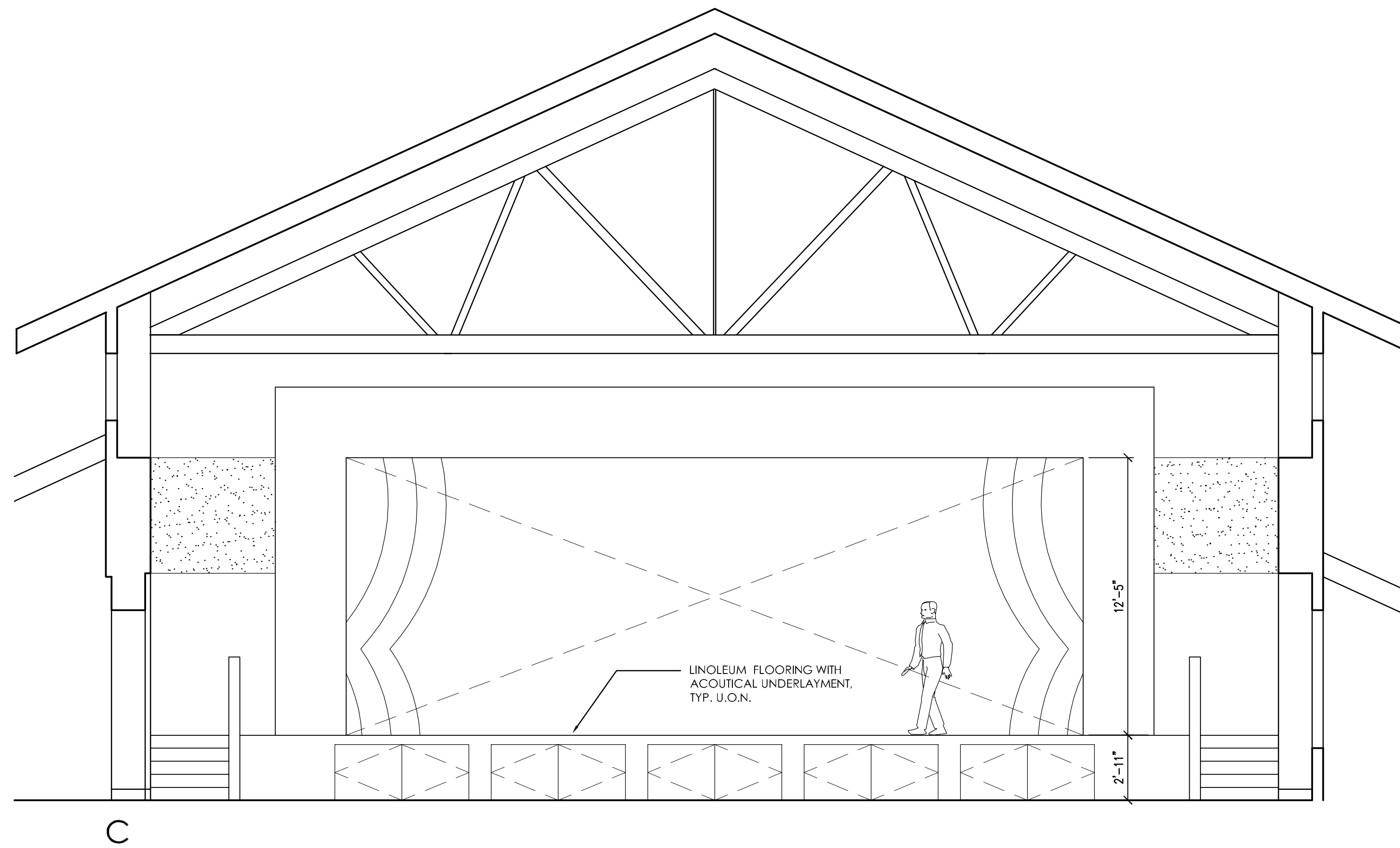


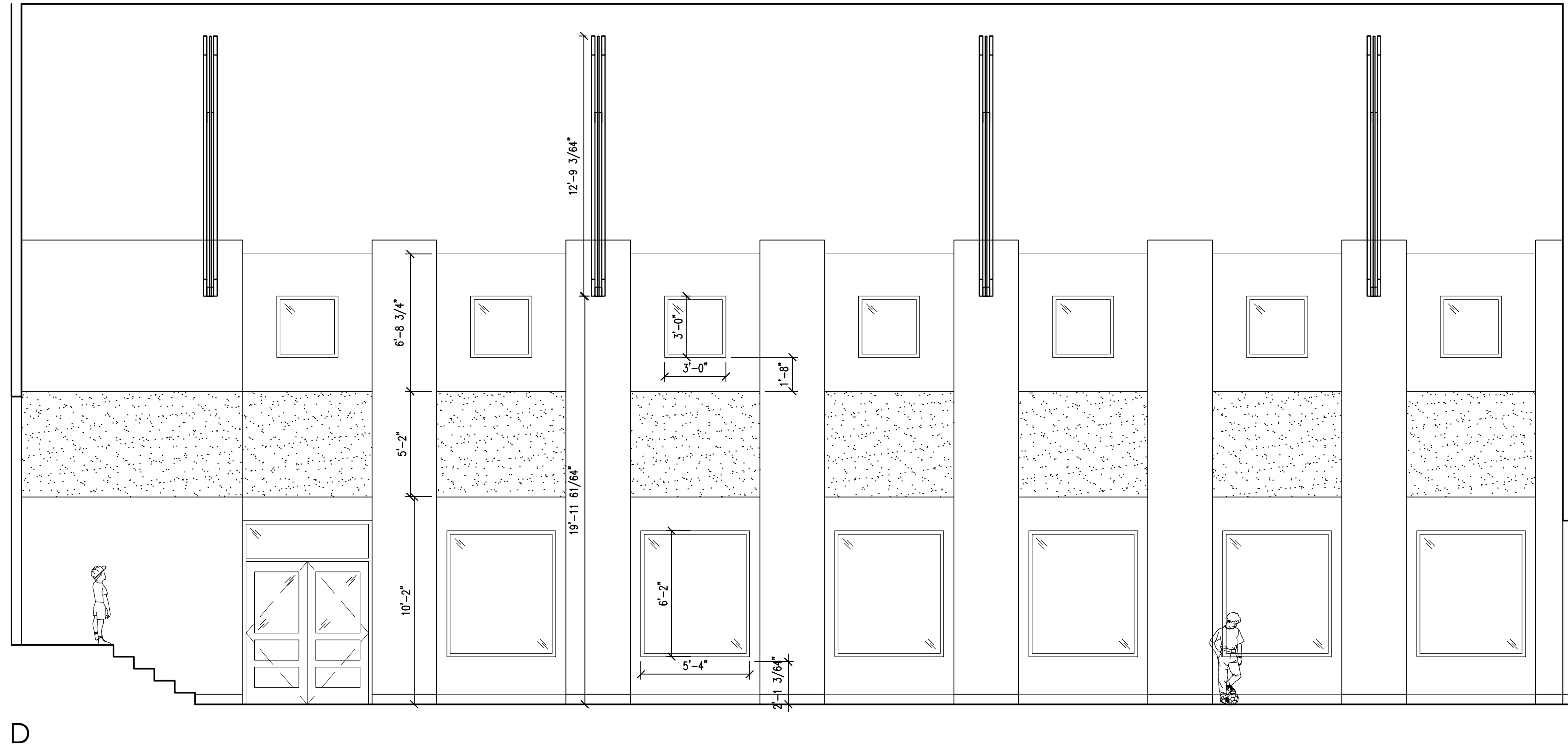
A



B

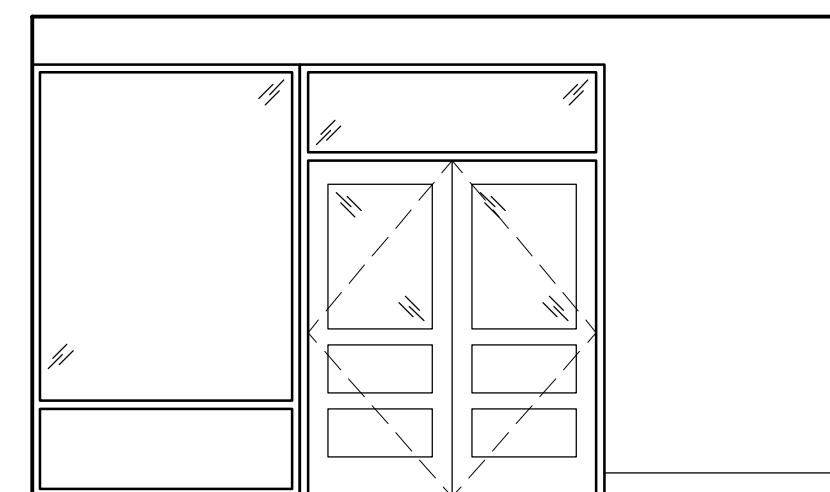


C

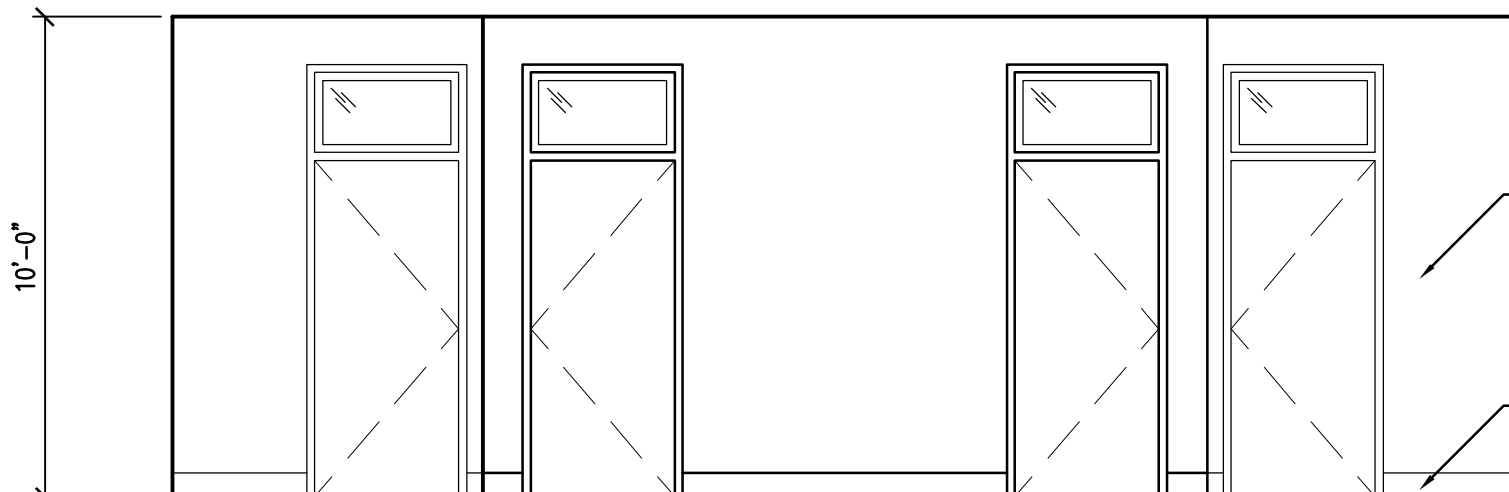


D

B1 1/4" = 1'-0" MULTI-PURPOSE ROOM RM# C109

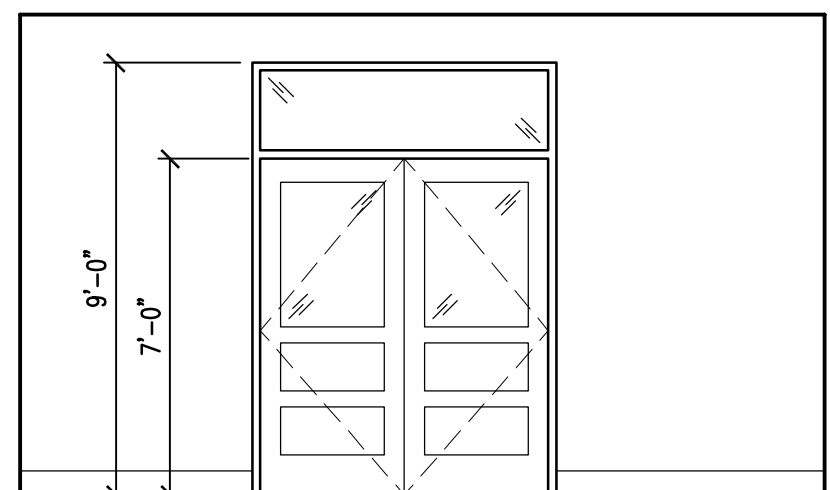


A

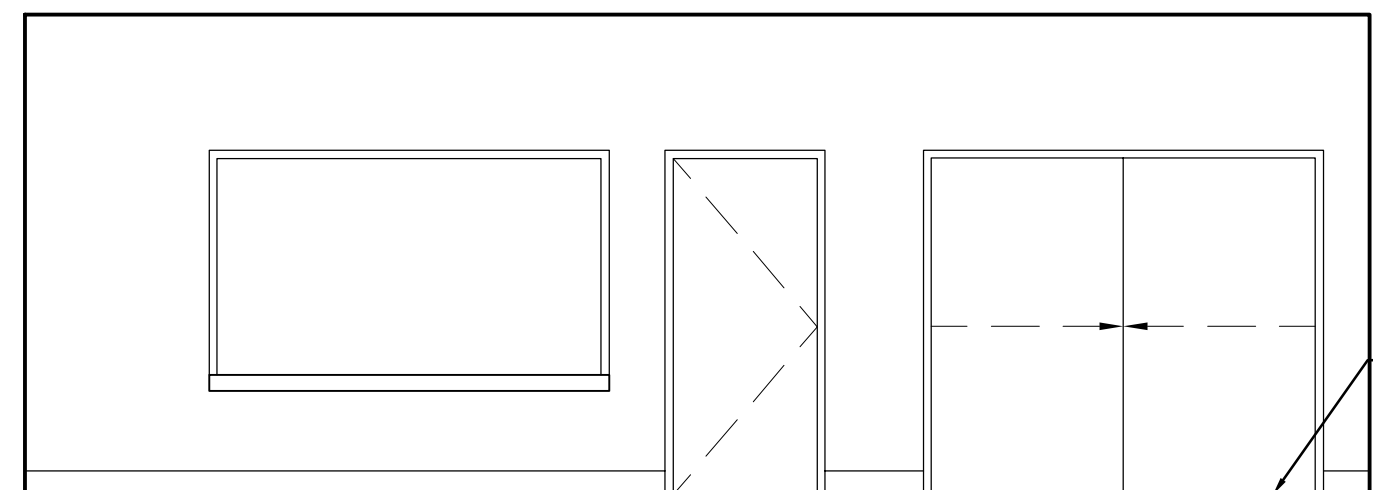


B

PAINTED GYPSUM BD., TYP. U.O.N.
6" RUBBER BASE, TYP. U.O.N.



C



D

LINOLEUM FLOORING, TYP.

A1 1/4" = 1'-0" LOBBY RM# C104

A3 GENERAL NOTES

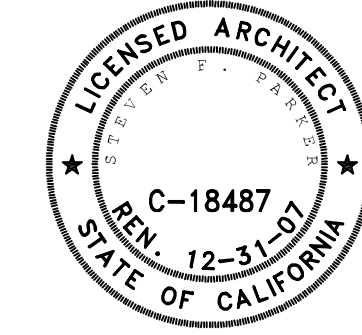
A4 SHEET NOTES

- ① SHEET NOTE
- ② SHEET NOTE



222 SUTTER STREET, 9TH FLOOR
SAN FRANCISCO, CALIFORNIA 94108
phone 415.777.9422 fax 415.777.2755 24/7 bparch.com
consultant

architect/engineer seal



agency/approval

IDENTIFICATION STAMP
DIVISION OF THE STATE ARCHITECT

APPL 01

AC _____ FLS _____ SS _____
DATE _____

project title

project title
Oakland Unified
School District

**CHABOT
ELEMENTARY**

6686 Chabot Road
Oakland, CA 94618

key plan

date description

10.10.2007 DESIGN DEVELOPMENT SUBMITTAL
8.21.2007 SCHEMATIC ESTIMATE SUBMITTAL

sheet title

BUILDING C -

INTERIOR
ELEVATIONS

project no. 2617.01

sheet no.

A-708

© Beverly Prior Architects, Inc. 2007 | All Rights Reserved