



**D1** 1/8" = 1'-0"  
BLDG. D - CLASSROOMS - NORTH ELEVATION

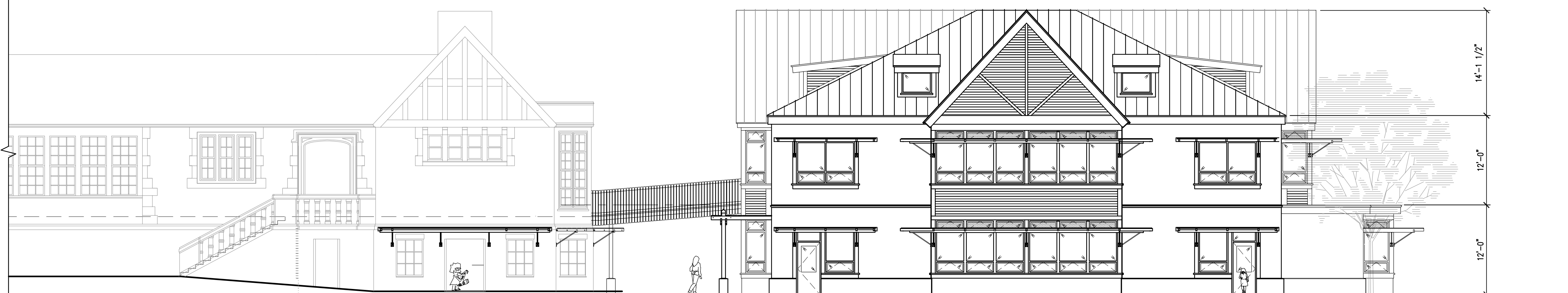
**D4** GENERAL NOTES



**C1** 1/8" = 1'-0"  
BLDG. D - CLASSROOMS - EAST ELEVATION



**B1** 1/8" = 1'-0"  
BLDG. D - CLASSROOMS - SOUTH ELEVATION



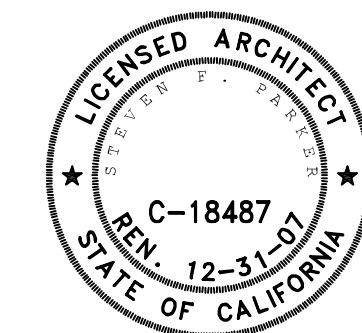
**A1** 1/8" = 1'-0"  
BLDG. D - CLASSROOMS - WEST ELEVATION

**A4** SHEET NOTES



222 SUTTER STREET, 9TH FLOOR  
SAN FRANCISCO, CALIFORNIA 94108  
phone 415.777.9422 fax 415.777.2755 24/7 bparch.com  
consultants

architect/engineer seal



agency/approval

IDENTIFICATION STAMP  
DIVISION OF THE STATE ARCHITECT

APPL 01

AC \_\_\_\_\_ FLS \_\_\_\_\_ SS \_\_\_\_\_  
DATE \_\_\_\_\_

project title

project title  
Oakland Unified  
School District

**CHABOT  
ELEMENTARY**

6686 Chabot Road  
Oakland, CA 94618

key plan

date description

10.10.2007 DESIGN DEVELOPMENT SUBMITTAL  
8.21.2007 SCHEMATIC ESTIMATE SUBMITTAL

sheet title

**BUILDING D -  
CLASSROOMS  
EXTERIOR  
ELEVATIONS**

project no. 2617.01

sheet no.

**A-203**

© Beverly Prior Architects, Inc. 2007 | All Rights Reserved

- ① SHEET NOTE
- ② SHEET NOTE