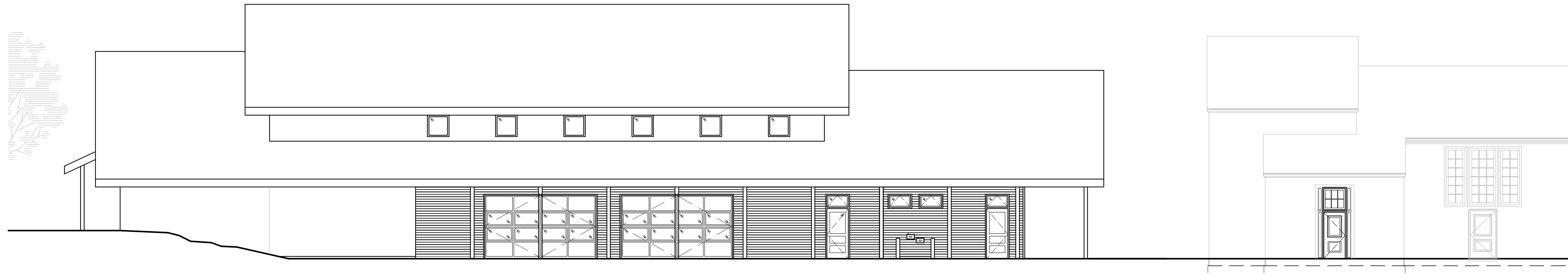
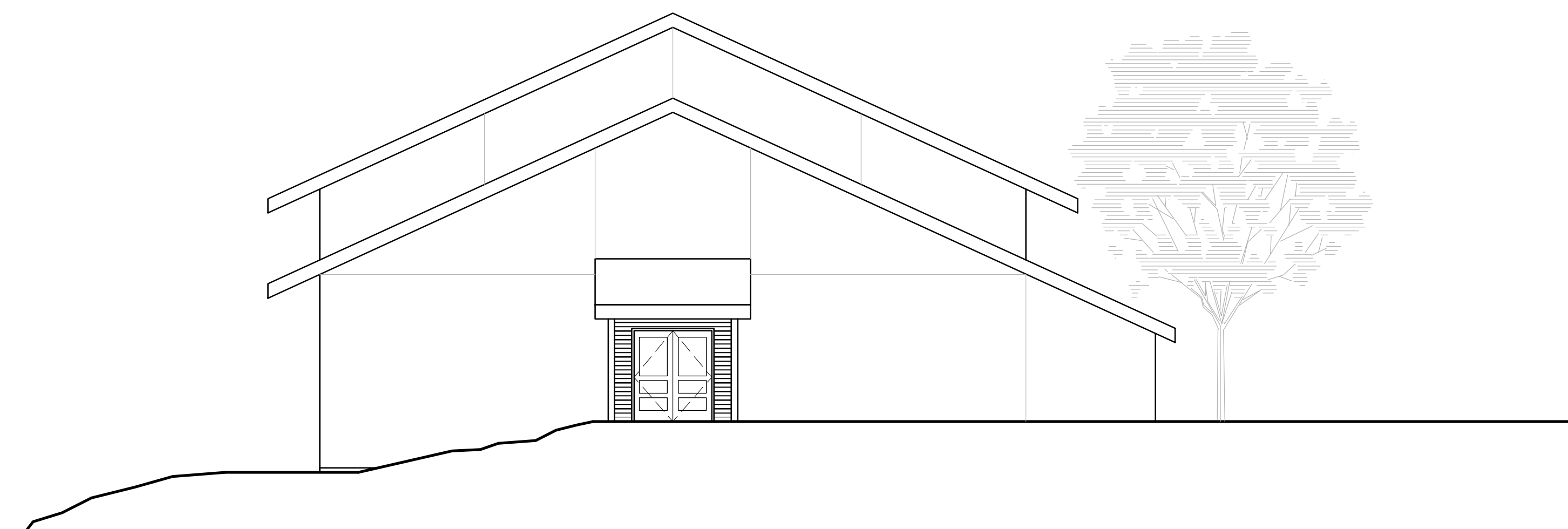


D1 1/8" = 1'-0"
BLDG. C - MULTI-PURPOSE - NORTH ELEVATION

D4 GENERAL NOTES



C1 1/8" = 1'-0"
BLDG. C - MULTI-PURPOSE - EAST ELEVATION



B1 1/8" = 1'-0"
BLDG. C - MULTI-PURPOSE - SOUTH ELEVATION

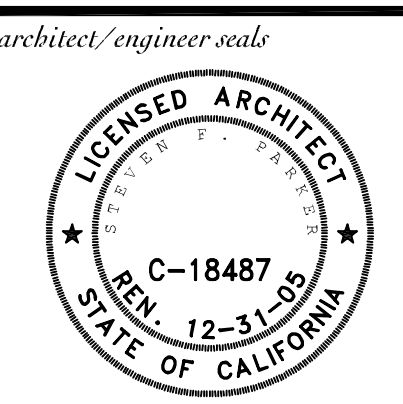


A1 1/8" = 1'-0"
BLDG. C - MULTI-PURPOSE - WEST ELEVATION

A4 SHEET NOTES

BEVERLY
PRIOR
architects

222 SUTTER STREET, 9TH FLOOR
SAN FRANCISCO, CALIFORNIA 94108
phone 415.777.9422 fax 415.777.2755 24/7 bparch.com
consultants



agency/approval

IDENTIFICATION STAMP
DIVISION OF THE STATE ARCHITECT

APPL 01

AC _____ FLS _____ SS _____
DATE _____

project title

Oakland Unified
School District

**CHABOT
ELEMENTARY**

6686 Chabot Road
Oakland, CA 94618

key plan

date	description

8.21.2006 ESTIMATE SUBMITTAL

sheet title

**BUILDING C -
MULTI-PURPOSE
EXTERIOR
ELEVATIONS**

project no. 2617.01

sheet no.

A-202

© Beverly Prior Architects, Inc. 2007 | All Rights Reserved